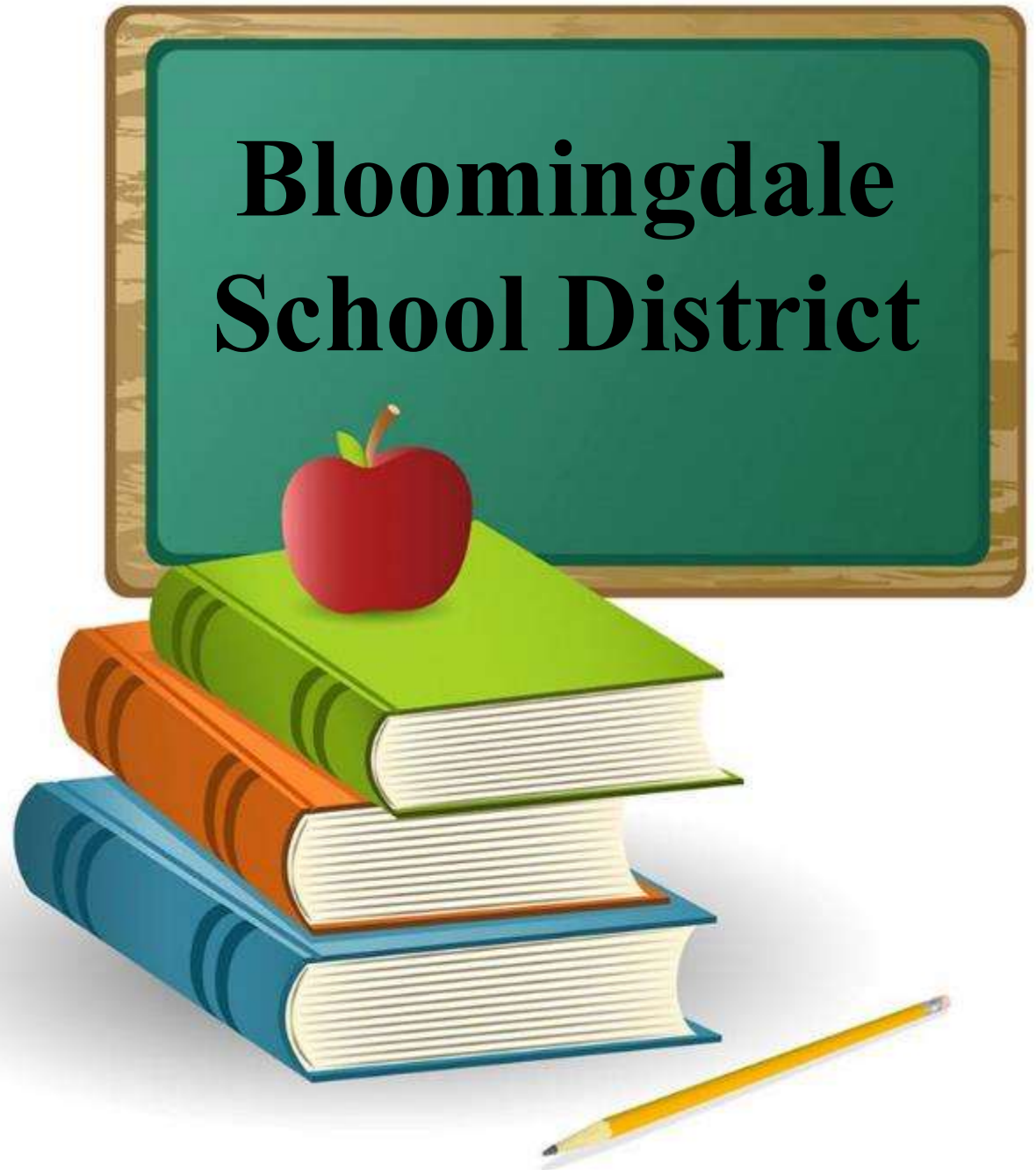


**2019-2020**  
**Proposed**  
**Budget**  
**Presentation**  
**May 7, 2019**



# Many Factors are Included in the Process of Planning a School Budget

- Student Achievement
- Safety and Security
- Enrollment Projections
- Class Size
- Special Education
- Staffing, Contracts and Benefits
- Program Offerings
- Technology
- Professional Development
- Curriculum and Instruction
- Supplies
- Facilities and Maintenance

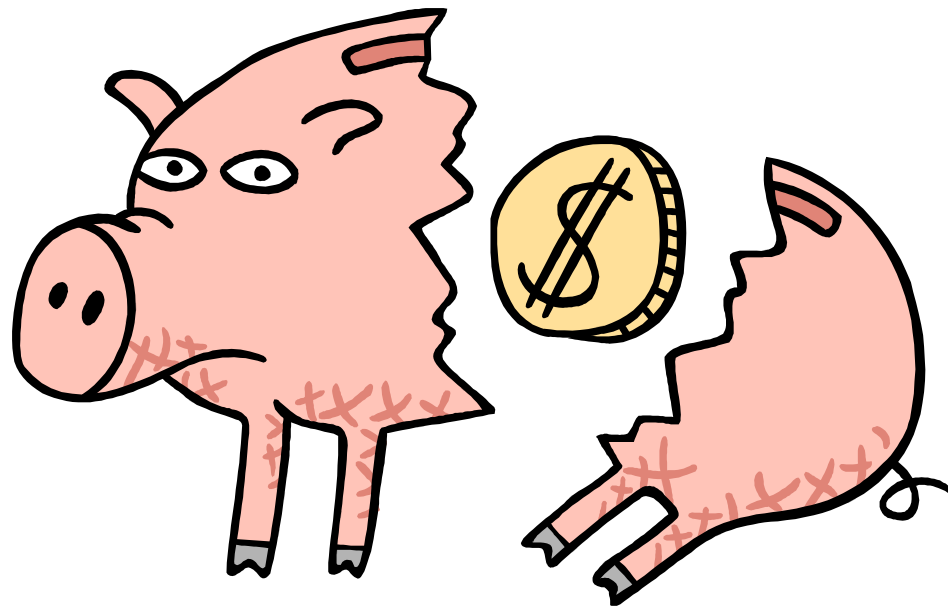


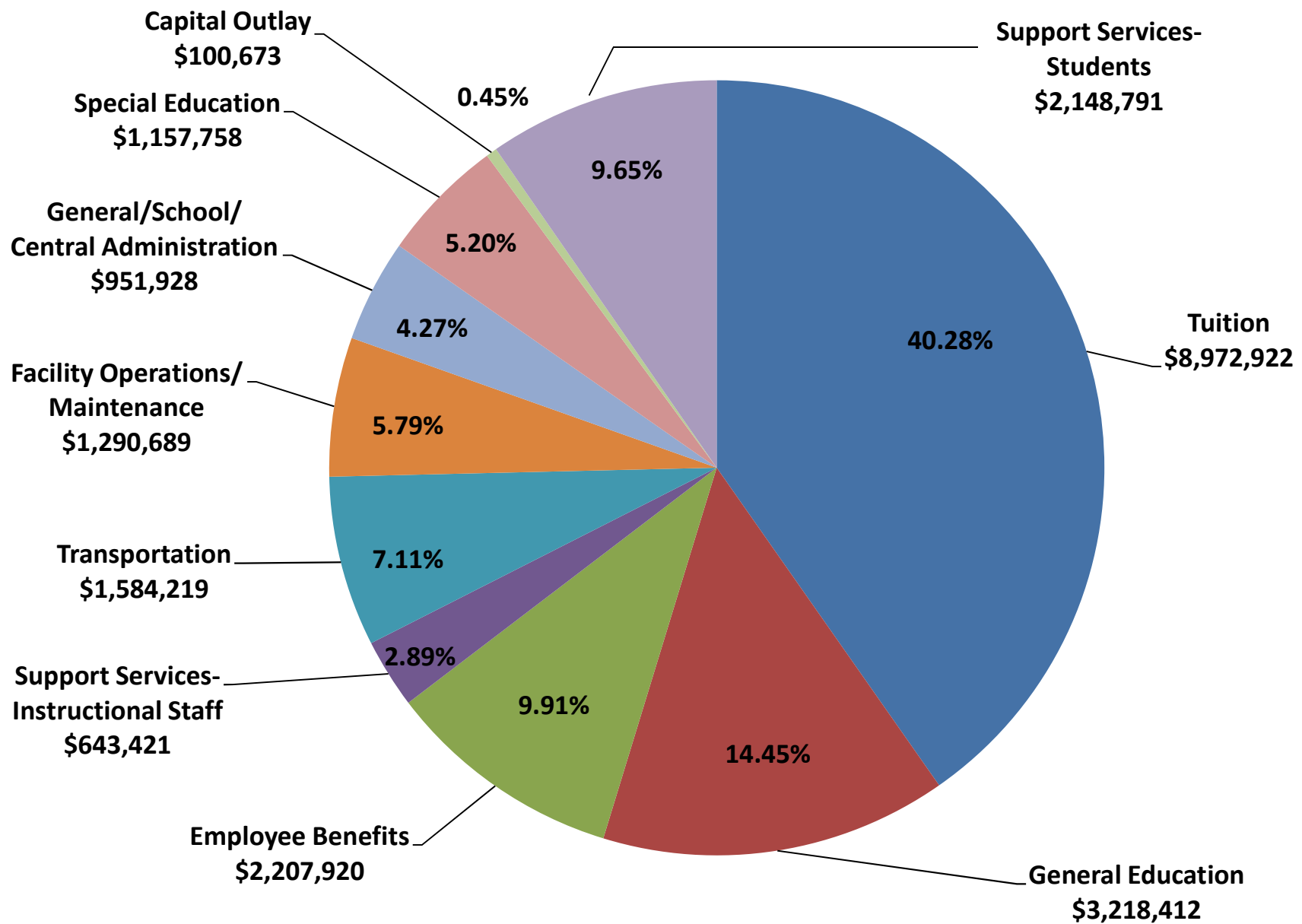
# Explanation of Funds

---

- General Fund
  - Operating budget – Today's focus
- Special Revenue Fund
  - Entitlements are received later in the year
- Debt Service Fund
  - Obligation at time of debt occurring
    - i.e. – Sale of bonds

# Where Does The Money Go?





# 2019-2020 K-8 Bloomingdale Budget

## Total Appropriations General Fund

2018-19	2019-20	\$ Increase	% Increase
\$21,848,657	\$22,276,733	428,076	01.96%

# Where Does the Money Come From?



# 2019-20 Bloomingdale School Budget Revenues

	2018-2019	2019-2020	Difference	Percentage	% of Revenues
Local Tax Levy	\$ 17,120,452	\$ 17,462,861	\$ 342,409	2.00%	78.39%
Miscellaneous Revenues	162,650	179,218	16,568	10.19%	0.80%
State Aid	2,434,532	2,158,119	(276,413)	-11.35%	9.69%
Use of Reserves/Fund Balances	2,253,673	2,476,535	222,862	9.89%	11.12%
	<b>\$ 21,971,307</b>	<b>\$ 22,276,733</b>	<b>\$ 305,426</b>	<b>1.39%</b>	<b>100.00%</b>



# Academics



## Language Arts

- Reading & Writing Workshop - K-1
- Foundations - K-2
- Reading Street - 2-5
- Achieve 3000 – Differentiated Reading - 3-8
- Achieve 3000 – Smarty Ants - K-2
- Professional Development – K-8

# Academics



## Mathematics

- Everyday Math – K-5
- Connected Mathematics 3 (CMP3) - 6-8
- Conquer Math Workshops - K-8
- Increased Basic Skills Instruction

# Academics



## Science

- Knowing Science - K-4
- F.O.S.S. - 5-8
- Achieve 3000 e-Science - 6-8
- Increased Basic Skills Instruction
- Professional Development - K-8

# Academics



- Pilot Social Studies Program - 5-8
- Financial Literacy Program - 6-8
- Theater Arts through Music & ELA- K-5
- Dance through Health & P.E. - K-5

# Academics



## Whole Child Learning

- Social Emotional Learning - K-8
- Mindfulness - K-8
- Kinesthetic Best Practices - K-8
- Professional Development - K-8

# Academics



## Technology - Instructional

- Purchase Chromebooks- Grade 7
- New Dell Desktops - WTB
- Document Cameras as needed
- Coding software and hardware - K-4
- Web Design & Robotics - 5-8
- TEQ On-Demand & Online Professional Development

# Academics



## Technology - Infrastructure

- New Telephone System
- Wifi Access Points - SRD
- Server & Switch Upgrades

# Operations



- NJQSAC - Revisited
- Standard Operating Procedures
- Position Control Roster
- School Improvement Panels (ScIPS)



# Facilities



- Energy Savings Improvement Plan (ESIP)
- Purchase Delivery Van – Enterprise Account

# 2019-20 Budget Tax Levy

## BLOOMINGDALE AVERAGE HOME ASSESSMENT



**\$254,700**

	2018/2019	2019/2020
Tax Levy Increase	3.65%	2.00%
Annual Increase on Average Home	\$ 209.50	\$ 121.00
Monthly Increase on Average Home	\$ 17.46	\$ 10.12

**Thank You**

**2019-2020**

**Bloomington School District Budget**